



**PRODUCE**

Production order processing

# Plan, approve and track production steps for manufacturing companies using SAP Business One

---

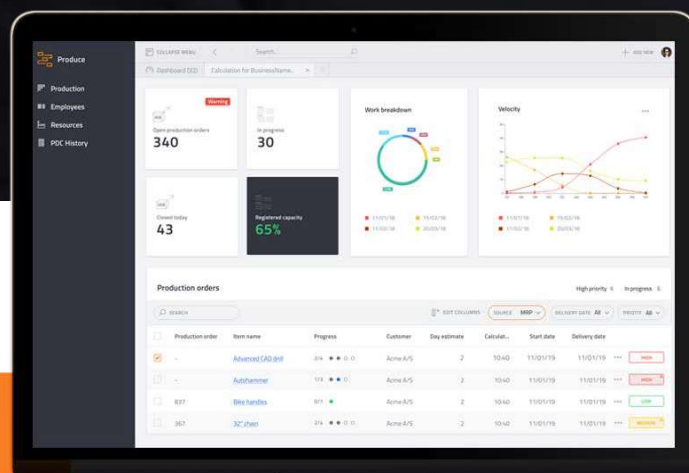




## PRODUCTION ORDER PROCESSING

Boyum Cloud Produce helps you to **manage production orders** by planning, approving and tracking production steps in real-time

Produce supports the collaboration of your production management and processing departments, providing a clear overview of approved work stages, and enabling both the monitoring of time and materials and the reporting of finished products.



# Key Issues

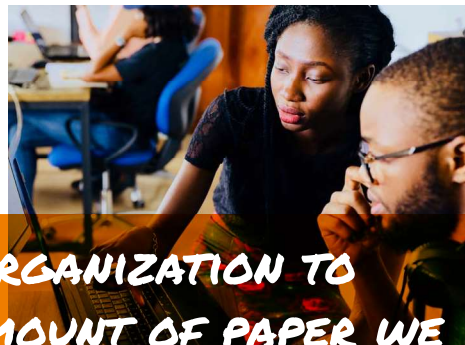
---

A lack of visibility of production resources and data **slows down decision-making**, which impacts both subsequent processes and delivery dates.

Pulling together detailed information regarding production orders, such as status and availability, to enable true visibility can be a complicated and time-consuming process.

In order for a production manager and production team to work together effectively, a solution that provides real-time information is an absolute necessity. Any delay to material receipts and stages of work can result in a negative impact on subsequent processes and delivery dates. Any delay to material receipts and stages of work can result in a negative impact on subsequent processes and delivery dates.

Boyum Cloud Produce specifically targets the management of production orders and their preparation and release for production. This solution handles all stages of work up to the finished product, as well as traceability and the analysis of related data.



**"PRODUCE ALLOWS US AN ORGANIZATION TO DRASTICALLY REDUCE THE AMOUNT OF PAPER WE USE, WHILST ACCURATELY RECORDING THE PRODUCTION TIMES, SO WE CAN SEE IN REAL-TIME WHAT IS HAPPENING IN PRODUCTION."**

"Produce is saving us 30% of administration and production manager time per week, as orders are input by employees on the shop floor!"

Nicole Morrell, Head of Finance & Digitalisation, Bio-D

# Use case

---

**Imagine** that you're running a traditional manufacturing company that develops and produces products.

There are production orders available in SAP Business One, and these are usually printed and handed to the shop floor operators to work with. Time and materials are entered manually on these, and the registration of this usage only happens in SAP after a user receives the papers back from production. This unnecessary delay in data entry makes real-time monitoring of production progress impossible.

There is no shop floor function available in SAP Business One, and this shortfall can cause various issues. With no integration to the shop floor, the production manager and operators are disconnected, which leads to the loss of important information and delays in the overall production process. In addition to this, changes to production orders are not visible to shop floor employees, as new printouts of the production order are required, which then have to be handed over manually.

The absence of immediate, online access to information that's relevant to production (e.g. material and resource requirements, stock levels, production instructions) has a negative impact on the entire production process. The monitoring of production orders becomes a difficult task and the flow of production is interrupted, causing both delays and the possible omission of changes to production orders.





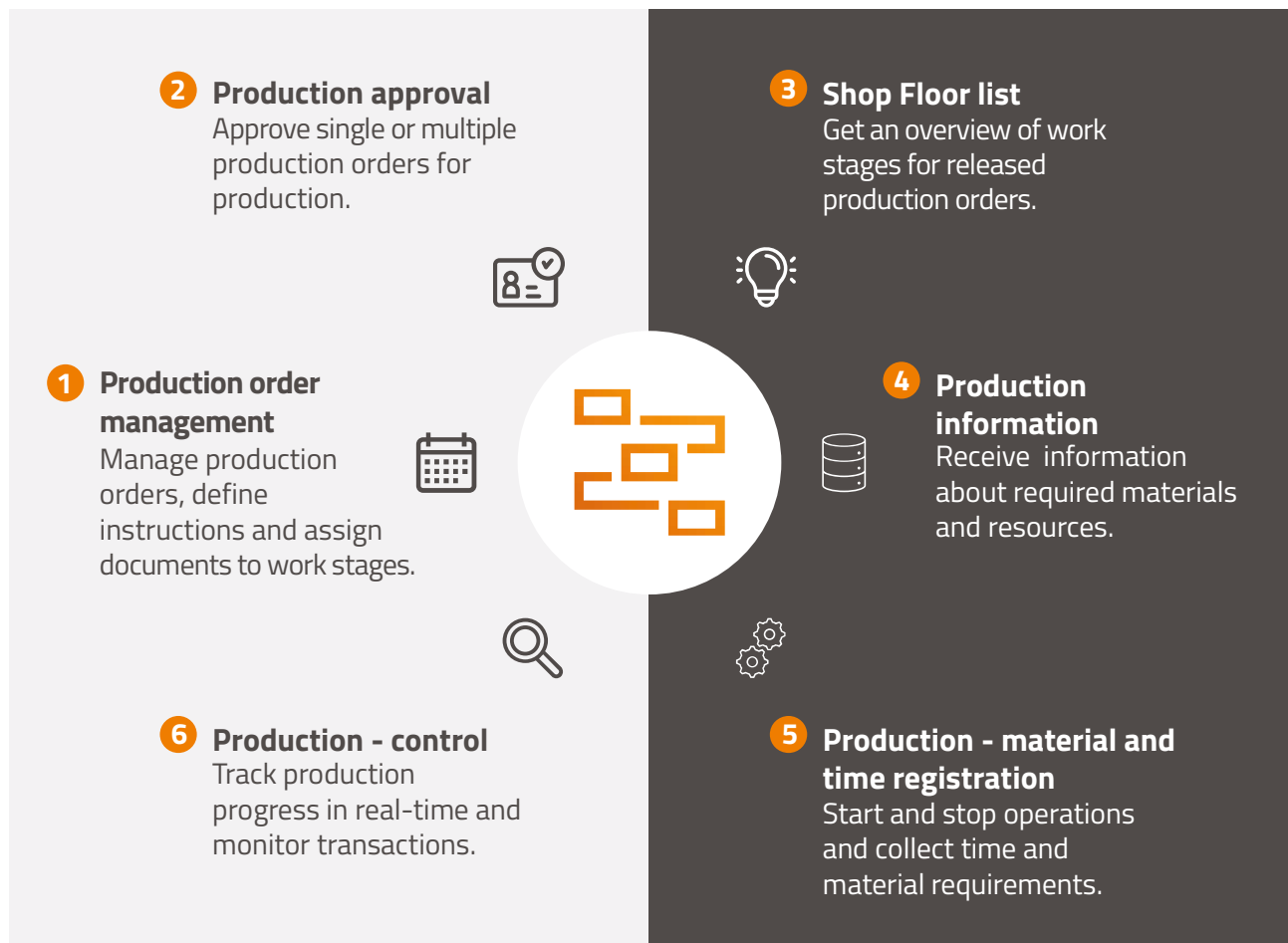
# Produce consists of 2 applications that work seamlessly together

## PRODUCE / MANAGER

Plan and execute production orders, and track progress in real-time.

## PRODUCE / OPERATOR

View production orders and register time/materials.



**Produce Manager** enables production managers to prioritize, release and monitor production orders. With a Manager license you can easily manage production thanks to a clear overview of open production orders detailing priorities and progress. A Produce Manager user can approve single or multiple production orders, define instructions or assign documents/quality inspection plans to work stages, control sequence and visibility on shop floor terminals and receive real-time notifications regarding delays in material procurement and the production process.

**Produce Operator** enables shop floor employees to start and stop operations efficiently, while gathering time and material requirements with minimum effort. An Operator license allows for paperless collection of production data, and displays work stages for released production orders, complete with real-time information relating to the availability of materials and resources, on the terminal.

# Key features

## Produce / Manager

### Production order management

Manage production order details, define instructions and assign documents and quality inspection plans to work stages.

### Production order overview

Get an overview of open production orders with priorities and progress.

### Rough planning

Prioritization of production orders to control the sequence and visibility on the shop floor terminal.

### Production order approval

Approve single or multiple production orders for production.

### External operations

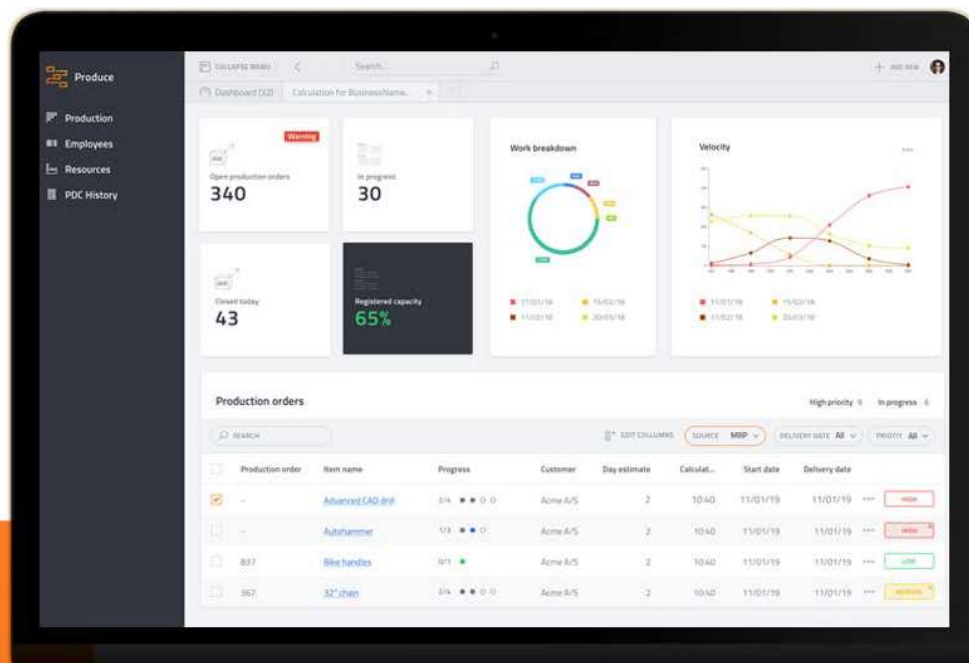
Management of external work stages, creation of purchase orders with provision of materials and receipt of external work stages.

### Production progress tracking

Real-time overview of production progress and notification of delays in material procurement and production process.

### Production data collection (PDC) History

Track time receipts and material consumption and monitor missing or incorrect transactions.



# Key features

## Produce / Operator

### Shop floor terminal

Easy access for shop floor employees for a paperless collection of production data

### Production Data Collection

Start and stop of work stages with time receipt, material receipt and reporting of finished products.

### Work list overview

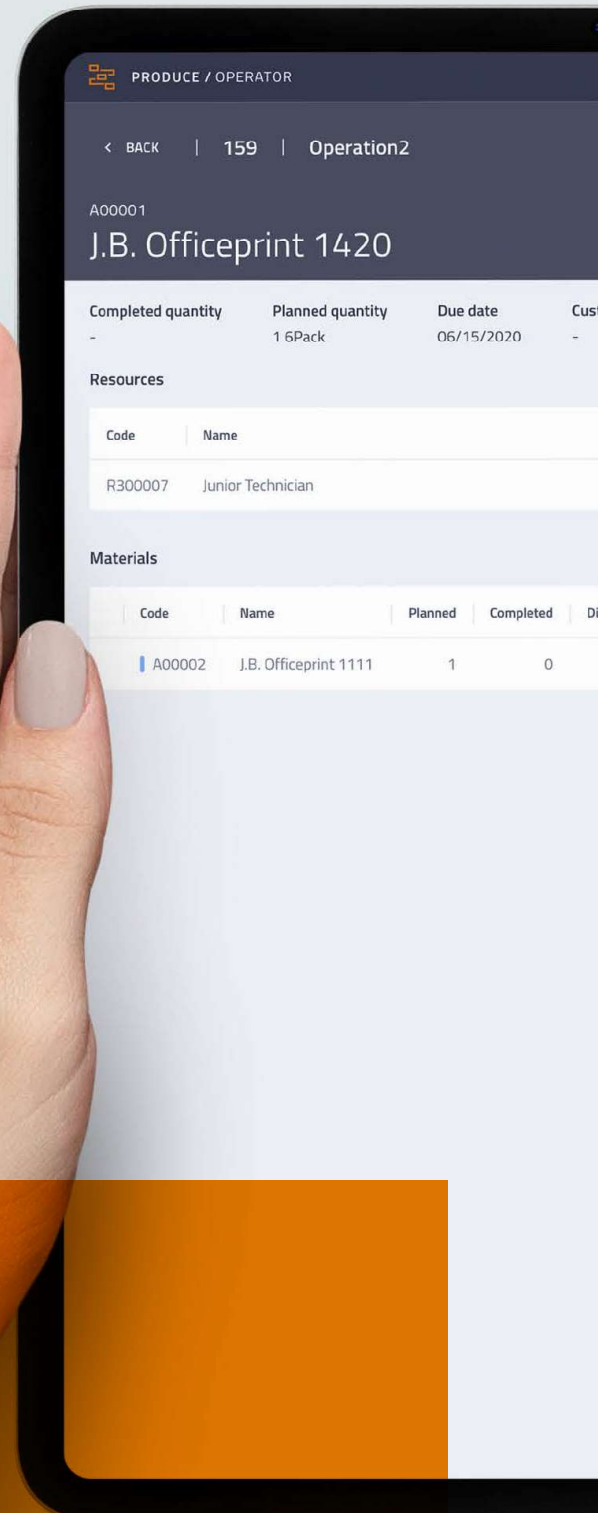
Overview of approved work stages with information on material availability and resources.

### Paperless instructions

Access to instructions, quality checks and documents for individual work stages.

### Scanner support

Reading and material selection via barcodes and scanner for batch or serial number items.





# Industry **leading** solution provider

---

Boyum IT Solutions is today the global leading software solution provider in the SAP Business One ecosystem and have received more than 20 SAP awards. Among these are the SAP Global Solution of the Year Award and People's Choice Award, which we received for the last 4 years.

We have the largest partner and customer ecosystems, with a presence in 115 countries and just over 9,000 customers and 200,000 users.

## **L A K E**

### LAKE FINANCIAL SYSTEMS



0113 273 7788



[info@lake.co.uk](mailto:info@lake.co.uk)



[www.lake.co.uk/sap](http://www.lake.co.uk/sap)



Stable Mews, Beechwoods, Elmete Lane, Leeds LS8 2LQ